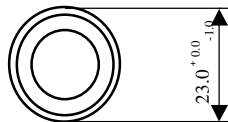
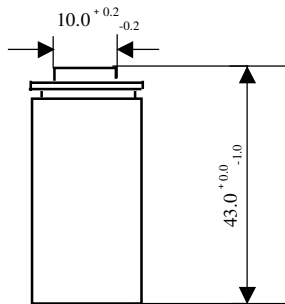


## Sealed Rechargeable Ni-MH Cylindrical Cell

### Specifications

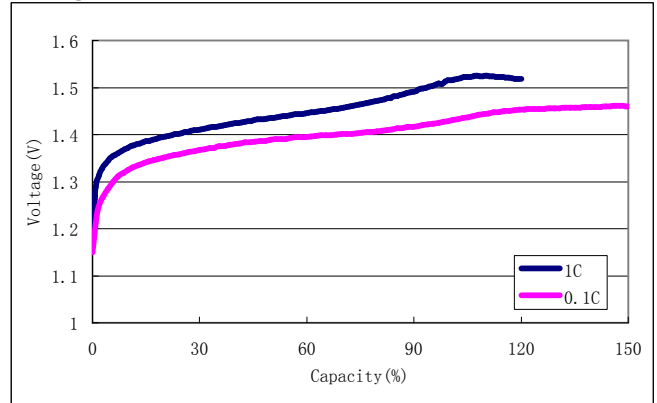
Nominal voltage		1.2V	
Capacity (mAh)		0.2C discharge	0.5C discharge
	Minimum	3250	3200
	Typical	3300	3250
Dimensions (mm)	Diameter	23.0 <sup>+0.0</sup> <sub>-1.0</sub>	
	Height	43.0 <sup>+0.0</sup> <sub>-1.0</sub>	
Weight (g)	58		
Cycle life		300cycles	
Charge	Standard	330mA(0.1C)×15hrs	
	Rapid	1650mA(0.5C)×135mins or dV=-10mV	
Ambient temperature (°C)	Standard charge	0°C to 45°C	
	Rapid charge	10°C to 45°C	
	Discharge	-20°C to 65°C	
	Storage	-10°C to 45°C	

### (CELL DIMENSIONS)

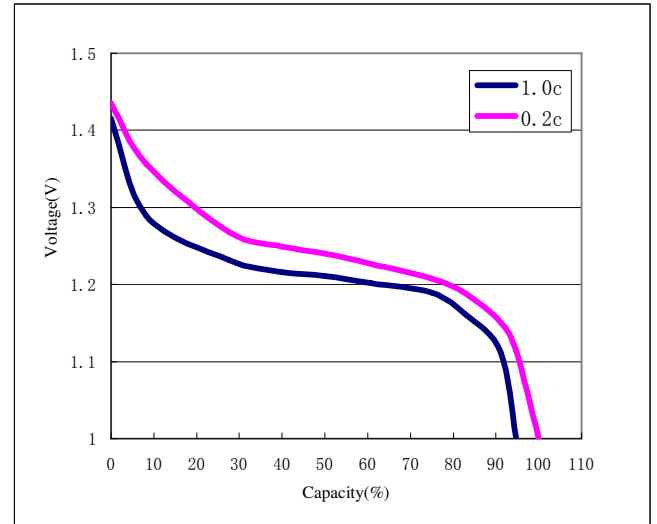


(With tube)

### Charge Characteristics



### Discharge Characteristics



### Cycle Characteristics

